



GENEVO

USER'S + INSTALLATION MANUAL



GENEVO HD+ / HDM+ Radar antenna

Main functions of the GENEVO HD + / HDM + radar antenna

The GENEVO HD + and HDM + devices are radar antennas designed for fixed installation in a car. The main functions are the detection of microwave radars (K / Ka narrow bands), laser guns and in combination with GENEVO PRO and PRO II products, or with the GENEVO GPS + detector (wireless connection) it communicates with the driver in the English language and also detects stationary cameras, red light cameras and section speed cameras.

Installation:

Although the installation of GENEVO HD + / HDM + is not complicated, we recommend entrusting it to a professional service, or to your dealer, if he is able to provide a quality technical background for installation.

Radar antenna installation:

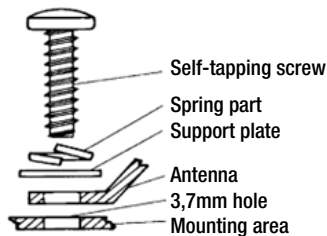
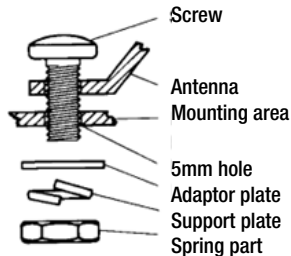
The antenna picks up the signals transmitted by the radar, and therefore the choice of location for its installation is crucial for the correct function and good sensitivity of the detector.

The antenna is mounted in the front of the car, usually in a plastic bumper or behind the front grille in front of the vehicle's radiator. It must be installed in a place where the front part has a good view of the road in front of the vehicle. It is ideal to place the antenna in the bumper vent at a height of 30-50 cm above the road. If you decide to mount the antenna so that the bumper covers the front of the antenna, make sure what material the bumper is made of and whether it has metal reinforcement. Some types of plastics can attenuate radar waves and reduce the efficiency of the detector. Never mount the antenna behind metal parts of the vehicle!

When used in countries with vertically polarized radars, install the antenna in a vertical position, i.e. placed „on its side“, where the detector has maximum sensitivity and a minimum of false alerts. The connecting cable must point backwards and the mounting holes up and down. Installation in a horizontal position is also possible, with the mounting holes facing left and right.

Selection of mounting screws:

When installing the antenna, you can use both a self-tapping screw, which you will use in places where the nut cannot be attached from the other side, and a classic screw with a nut:



Antenna mounting:

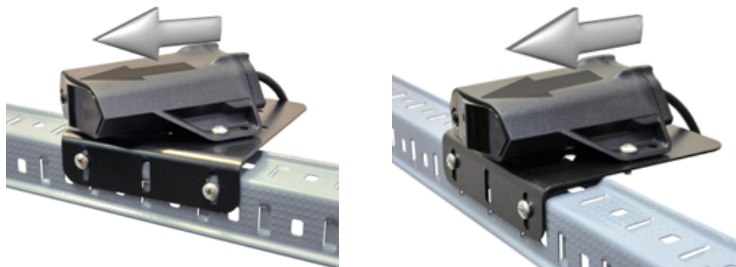
After selecting a suitable location for the antenna and screw type, drill two to four screw holes. We recommend fixing the antenna with 4 screws. You may bend the antenna cable slightly. First, fasten the antenna crosswise with two screws, and after partially tightening it, install the remaining two.

For some vehicles, it is advisable to use a special pad for installation, which is part of the package. It has an „L“ shape and is made of thick sheet steel with pre-drilled holes. Screw the washer to the appropriate place first and then attach the antenna to the washer.

Example of a vertical antenna mounting (arrow pointing in the direction of travel > front of the car), recommended for CZ and AT:



Example of horizontal antenna mounting (arrow pointing in the direction of travel > front of the car):



Antenna cable:

After attaching the antenna, route the cable to the driver's cab. We recommend adding it to the existing cabling and fastening it with fastening straps. The cable length from the antenna to the connector is 1 meter. The length of the second part of the cable is 2 meters. The antenna connector is waterproof and allows easy connection and disconnection when changing the location of the antenna or replacing it.

When routing the cable, keep in mind that the cable must not touch hot parts of the car or be installed in places with elevated temperatures and must not be attached to moving parts of the car!

Use a hole with a diameter of approx. 8 mm to extend into the driver's cab area. If none is free, drill a hole in a suitable place. The drilled hole must be adjusted so that the cable is protected against unwanted abrasion, for example by using a rubber grommet. Use extreme caution when drilling a hole to avoid damaging the surrounding wiring.

**12V power supply:**

After mechanically installing the radar antenna and cabling, connect the cabling to the power supply. Connect the black wire to -12 V, the red wire with a fuse to + 12 V.

Before connecting the + 12 V power supply, remove the fuse from the housing due to the possibility of a short circuit during installation.

We recommend connecting the cabling to a switched power supply (15ka). If you connect the wiring to a permanent power supply (30 pcs), we recommend using a delay so that the antenna is not powered continuously and does not discharge the vehicle's battery.

Operating frequency:

Ka narrow: 34.0 GHz, 34.3 GHz, 34.7 GHz, 35.5 GHz (± 120 MHz)

Ka wide: 33.4 GHz ~ 36.0 GHz

K narrow: 24.125 GHz (± 70 MHz)

K wide: 24.125 GHz (± 150 MHz)

ISM band: 433.848 GHz (± 50 kHz), $P_{max}=100$ nW

Laser: 904 nm

Version HDM+: MultaRadar CD/CT, GATSO RT3, RT4

Technical parameters:

Operating temperature: -20 to +85 ° C

Operating voltage: 11 - 16 V DC

Power consumption: 190 mA normal, 220 mA max (At 12 V)

Power input: 2.64 W

Connector polarity: Positive

Power supply fuse: F2A/250V

Dimensions: 96 x 109 x 40 mm

Declaration of Conformity:

The manufacturer, GENEVO s.r.o., hereby declares that GENEVO HD+/HDM+ equipment complies with the essential requirements and other relevant provisions of Directive 2014/53/EU. The full Declaration of Conformity can be downloaded here: www.genevo.com/en/ce-hd-hdm.pdf

Additional information

Restrictions on placing in service or applicable requirements for permission to use:

County: AT, BG, CY, DE, DK, EE, ES, FI, FR, GR, IR, ITA, LT, LU, LV, MT, NL, PL, PT, SE, SK.

Requirements: Please check your legislation before use.

Please note: The product may only be used for the purposes specified in this manual. Never use damaged equipment.

If you wish to discard electrical and electronic equipment, please contact your dealer or supplier for further information.

Your Seller:

Manual REV: 2022-03-29

Manufacturer: GENEVO s.r.o., Radčina 497/22, 161 00 Praha 6